



# **SK1**

# **Printer Software**

# **Installation Manual**

# Contents

1. Software Overview .....	3
1.1 Windows Printer Driver .....	4
1.2 Printer Utility .....	5
1.2.1 Starting the Printer Utility.....	5
1.2.2 Printer Utility Functions.....	6
2. Operating Environment .....	8
2.1 Operating System .....	8
2.2 Supported Functions (Interface) .....	9
3. Installation .....	10
4. Uninstallation .....	13
5. Revision History .....	15

## **Notice**

- Windows is a registered trademark of Microsoft Corporation in the U.S, Japan and/or other countries.
- Company and product names are trademarks or registered trademarks of their respective companies.
- Reproduction of any part of this documentation is prohibited.
- The contents of this documentation are subject to change without notice.
- We can assume no responsibility for any results which may come out of the usage instructed in this documentation.

## 1. Software Overview

SK1 printer software package contains the Windows printer driver and a printer utility. To use the software package, follow the procedure given in chapter 3, "Installation," and then turn the printer on.

◆ **This is software of StarPRNT emulation exclusive use.**

To use the StarPRNT emulation, use the printer with "StarPRNT Mode". The emulation setting can be confirmed with self-print.

**Target Model and Firmware Versions**

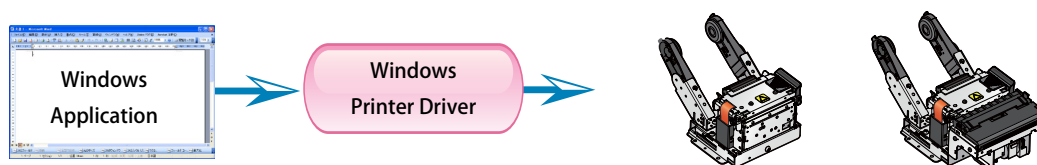
Target Model	Printer F/W
SK1-211/221	Ver 1.0 or later
SK1-211/221 Presenter	Ver 1.0 or later
SK1-311/321	Ver 1.0 or later
SK1-311 Presenter	Ver 1.0 or later

◆ **Simple method of switching over between ESC/POS and StarPRNT emulation modes**

1. In condition the power is off, the power should be turned on while pushing FEED/SELECT button opening the paper cover.
2. Green and Red LEDs are turned off.
3. StarPRNT emulation → Green LED is turned on in case of ESC/POS emulation switching.
4. ESC/POS emulation → Red LED is turned on in case of StarPRNT emulation switching.
5. When FEED button and SELECT button are released, the printer is initialized and operated with the selected emulation.

## 1.1 Windows Printer Driver

The Windows printer driver is used when files are printed from Windows applications.

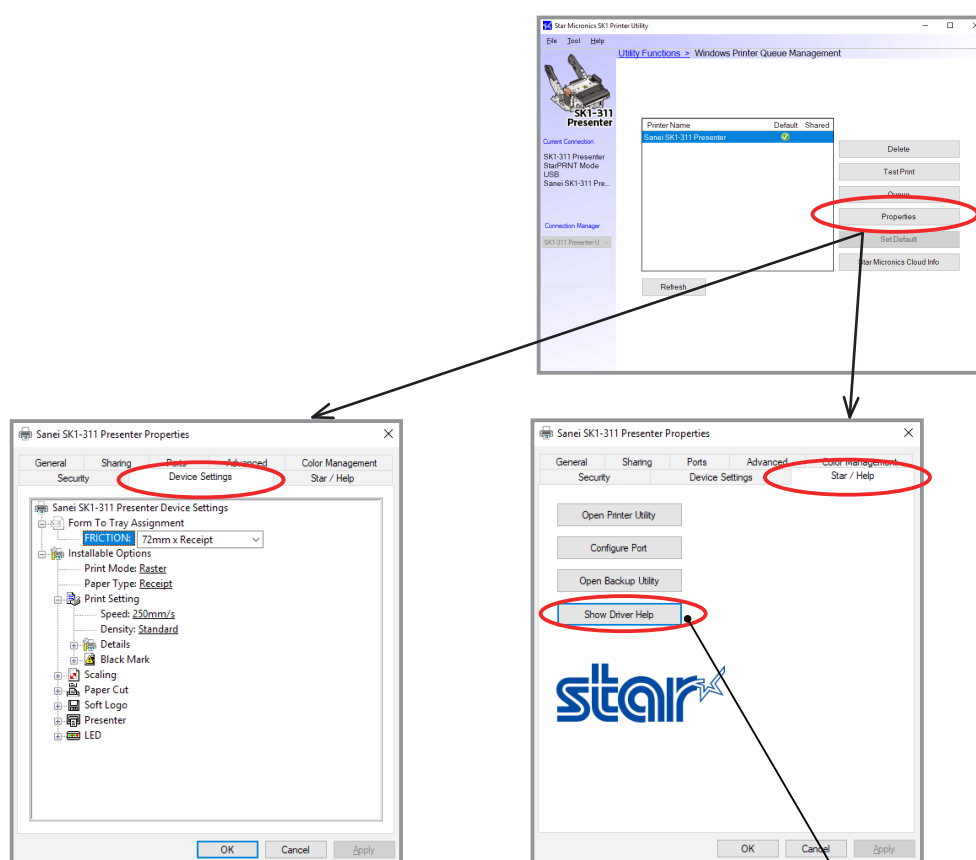


Install the SK1 Printer Software, and then connect a printer with a USB interface to the PC. The Plug and Play feature will enable the Windows printer driver automatically.

To use the Windows printer driver when you are connecting to the printer through an interface other than USB, install the driver from the Windows Printer Queue Management window of the printer utility.

When using the printer through the Windows printer driver, you can set options such as the paper type, paper cut type, and logo print method by clicking Properties in the Windows Printer Queue Management window of the printer utility.

For details about the printer driver, see the printer driver help.



**Starting the Printer Driver Help**

## 1.2 Printer Utility

The printer utility is used to connect to the printer and to set various options.

It can be used in conjunction with the Windows printer driver and in numerous other environments.

The printer utility is used over a specific "Connection" ("Connection" has specific properties the connection method).

For details on how to configure connections and on the utility functions, see the printer utility help.

### 1.2.1 Starting the Printer Utility

#### ❖ In Windows7

On the Windows taskbar, click 'Start', and then click 'All Programs' > 'StarMicronics' > 'Printer Software for SK1' > 'Printer Utility SK1'.

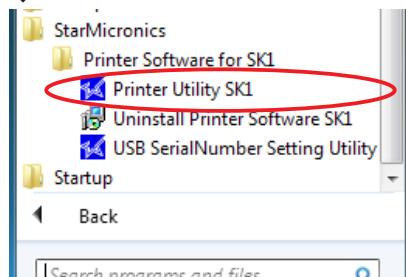
#### ❖ In Windows8 / 8.1

On the Apps, select [Star Micronics]-[Printer Utility SK1].

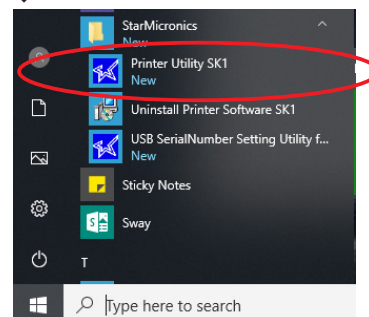
#### ❖ In Windows10

On the Windows taskbar, click 'Start', and then click 'All Apps' > 'StarMicronics' > 'Printer Utility SK1'.

#### ❖ Windows7



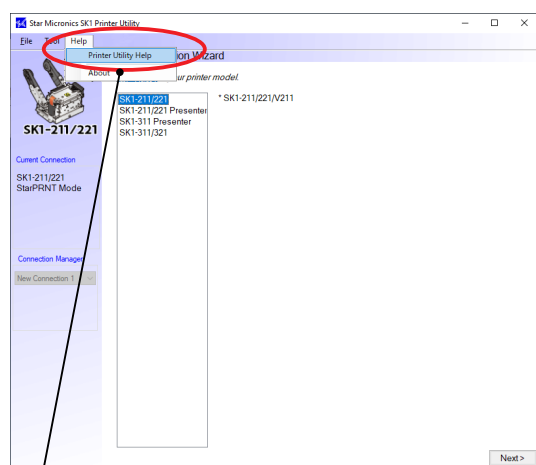
#### ❖ Windows10



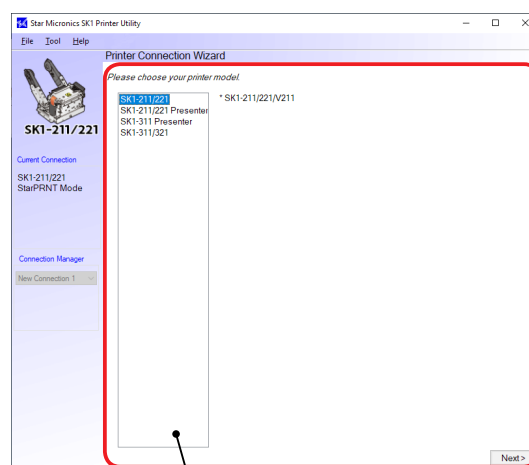
② The 'User Account Control' dialog appears. Click 'Yes'.

③ The printer utility window opens.

When you start the printer utility for the first time, the 'Printer Connection Wizard' appears. Please choose the interface to create a connection. You will be able to use the printer utility functions through the connection that you created.



**Starting the Printer Utility Help**



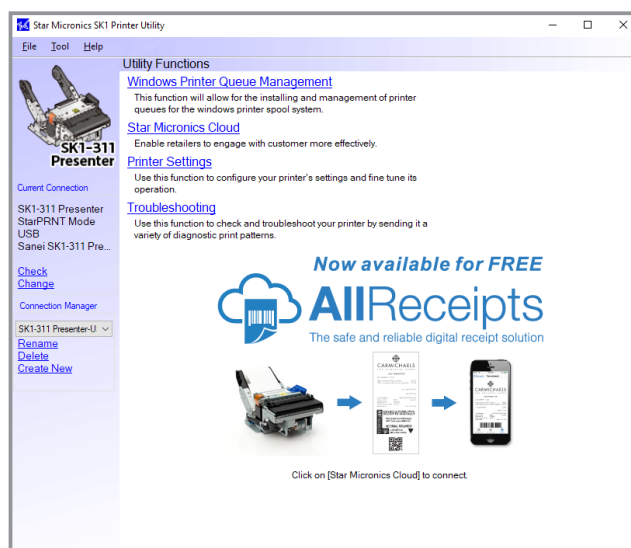
**Printer Connection Wizard**

## 1.2.2 Printer Utility Functions

### ■ Utility Functions

Click a link in the list of utility functions to display the properties of the corresponding function.

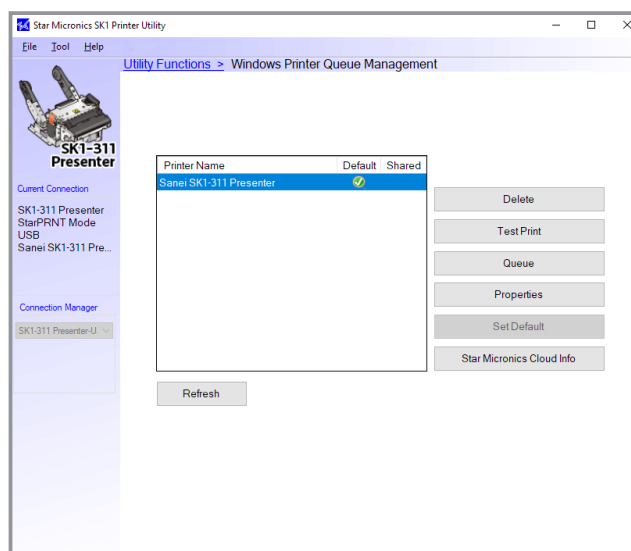
The printer utility is used over a specific connection (each connection has specific properties such as the connection method).



### ◆ Windows Printer Queue Management

Windows Printer Queue Management can be used to create and manage the printer queues of the Windows print spooler system.

To use the printer driver when you are connecting to the printer through an interface other than USB, install the Windows printer driver from this function.

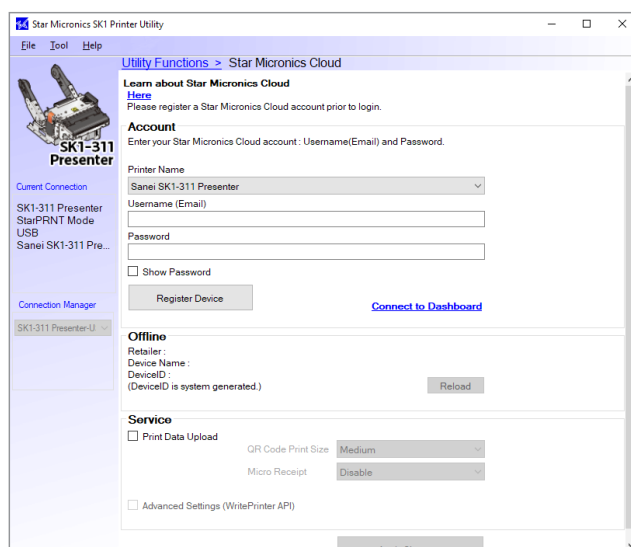


### ◆ Star Micronics Cloud

Register the device (SK1 printer queue) using your registered Star Micronics Cloud account.

Once you have registered the device, you can use the service of uploading print data to the cloud server and manage the registered device from the Star Micronics Cloud dashboard.

To use this function with SK1 printer queue, set the print mode to "Raster" from the Printer properties in the printer driver.

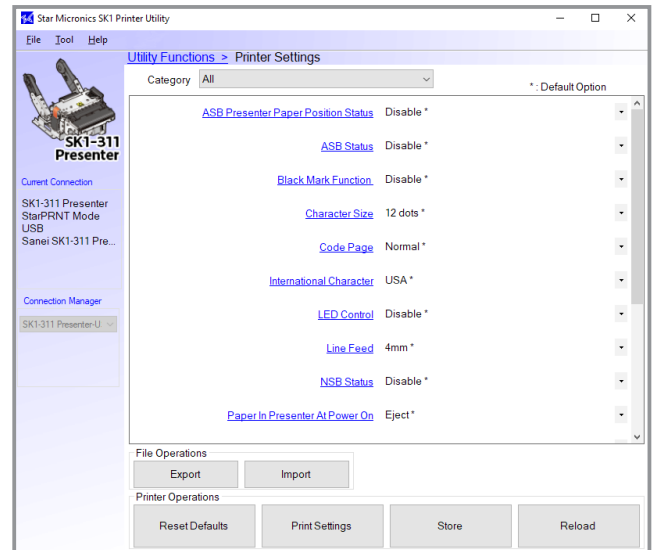


## ◆ Printer Settings

You can change the printer settings (memory switch settings) according to your needs.

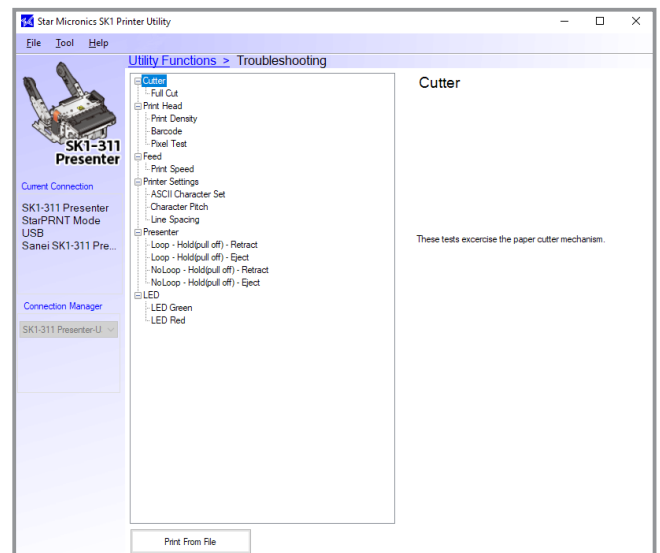
### *What are memory switches ?*

You can configure the basic settings of a printer and store them in memory switches on the printer.



## ◆ Troubleshooting

You can check the operations of various printer functions.



## 2. Operating Environment

### 2.1 Operating System

This software supports the following operating systems.

- ◆ Microsoft Windows 7            32bit/64bit
- ◆ Microsoft Windows 8\*        32bit/64bit ( except Windows RT )
- ◆ Microsoft Windows 8.1\*      32bit/64bit ( except Windows RT )
- ◆ Microsoft Windows 10\*       32-bit and 64-bit (except Windows 10 Mobile and Windows 10 IoT Core)

\*Limitation for Windows 8 / 8.1/ 10

- Star original Printer Driver Function (e.g. Logo Setting) can not be changed from “Windows UI (Modern UI)”. However, once the setting of its function is changed from “Desktop UI”, these function can be used on “Windows UI (Modern UI)” as well.
- USB Printer will not be appeared in [Device and Printer] if its power is off.
- Error status (e.g. Paper empty during printing) will not be shown in “Windows UI (Modern UI)”.



## 2.2 Supported Functions (Interface)

The following tables indicate the utility functions that you can use for each combination of the different interfaces models. One table is given for each model.

### • SK1-211/221 Series

SK1-211/221	USB I/F Printer Class	Serial I/F
Printer Utility	○	○
Windows Printer Queue Management	○	○
Star Micronics Cloud	○	○
Printer Settings	○	○
Troubleshooting	○	○

SK1-211/221 Presenter	USB I/F Printer Class	Serial I/F
Printer Utility	○	○
Windows Printer Queue Management	○	○
Star Micronics Cloud	○	○
Printer Settings	○	○
Troubleshooting	○	○

### • SK1-311/321 Series

SK1-311/321	USB I/F Printer Class	Serial I/F
Printer Utility	○	○
Windows Printer Queue Management	○	○
Star Micronics Cloud	○	○
Printer Settings	○	○
Troubleshooting	○	○

SK1-311 Presenter	USB I/F Printer Class	Serial I/F
Printer Utility	○	○
Windows Printer Queue Management	○	○
Star Micronics Cloud	○	○
Printer Settings	○	○
Troubleshooting	○	○

### 3. Installation

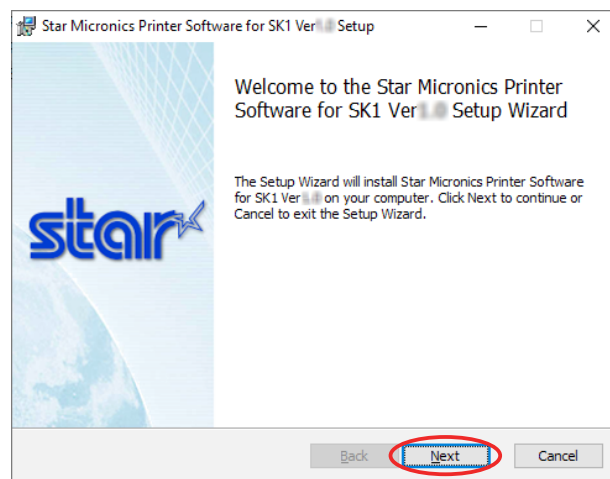
**Important:**

- Administrator privilege is required to run the installation.

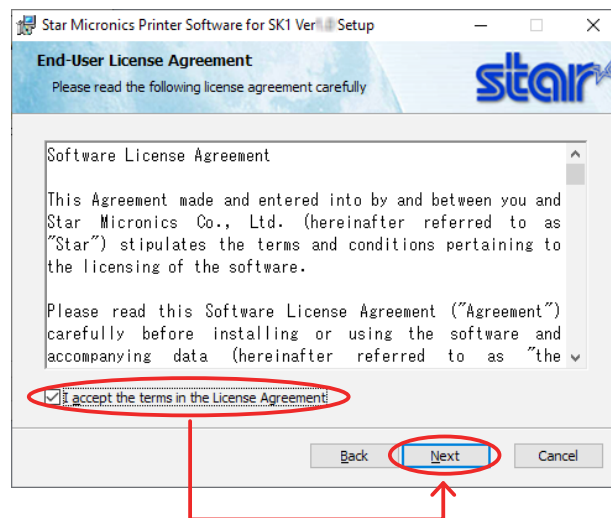
Follow the instructions below to install the software.

**Note:** If you are connecting to the printer by USB, carry out the instructions in chapter 3, "Installation," and then turn the printer on.

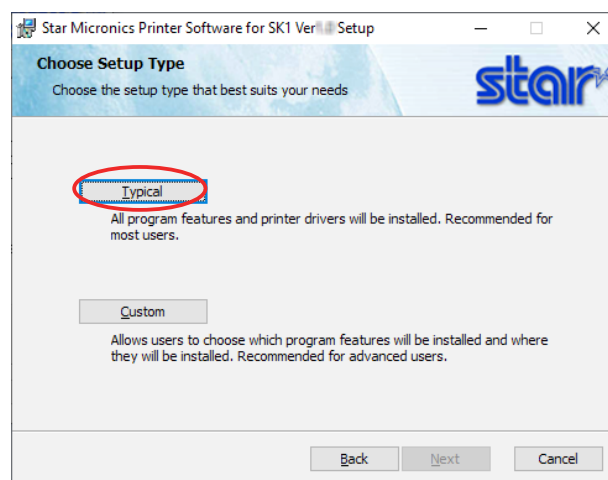
- ① Download "starprnt\_SK1\_v\*.\*\_setup\_32/64bit.zip" file from Star's website and save it.
- ② Unzip the zip file, and execute "setup.exe" in the root folder.
- ③ Follow the instructions from ④ to complete the installation.
- ④ The 'User Account Control' dialog appears. Click 'Yes'.
- ⑤ Click 'Next'.



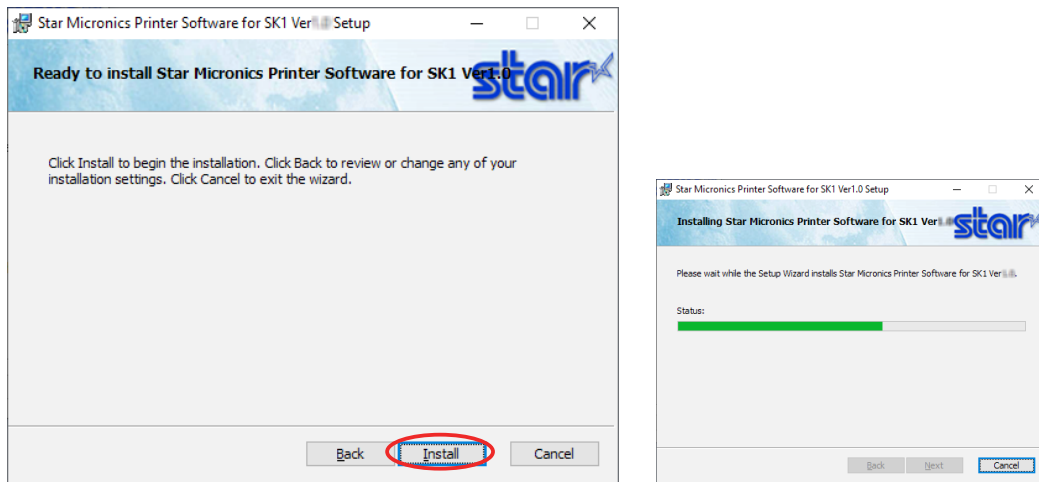
- ⑥ The End-User License Agreement, an agreement for installing the software, appears. Read the agreement. If you agree with the terms, select the 'I accept the terms in the License Agreement' check box, and then click 'Next'.



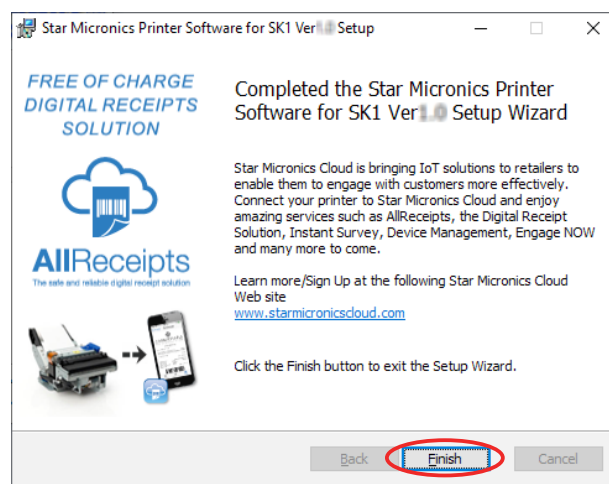
- ⑦ Choose the setup type.  
Click 'Typical' to install the all program features. Always select this option unless you have a specific reason. Click 'Custom' to install only the program features that you will need.



- ⑧ Click 'Install' to start the installation.



- ⑨ When the software installation completes, the following window appears. Click 'Finish' to close the wizard.



## 4. Uninstallation

Follow the procedure below to uninstall the software.

① Turn the printer power switch off.

② ❖ In Windows7

On the Windows taskbar, click 'Start', and then click 'All Programs' > 'Star Micronics' > 'Printer Software for SK1' > 'Uninstall Printer Software SK1'.

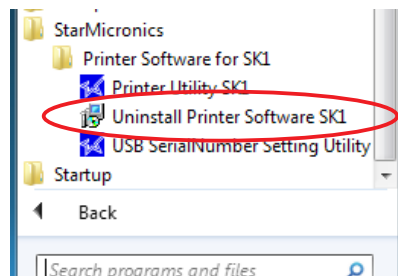
❖ In Windows8 / 8.1

On the Apps, select [Star Micronics]-[Uninstall Printer Software SK1].

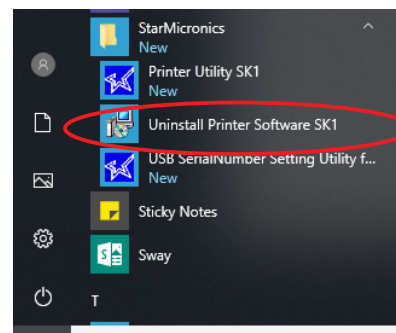
❖ In Windows10,

On the Windows taskbar, click 'Start', and then click 'All Apps' > 'Star Micronics' > 'Uninstall Printer Software SK1'.

❖ Windows7

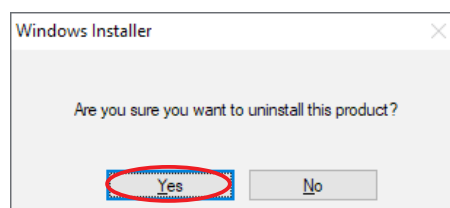


❖ Windows10

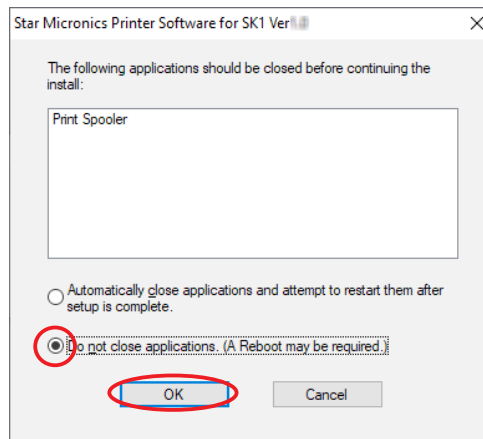


③ The 'User Account Control' dialog appears. Click or 'Yes'.

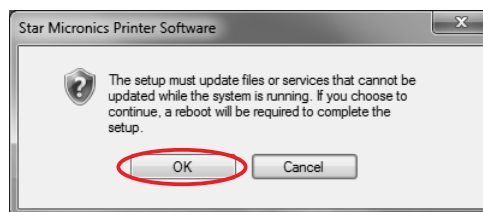
④ The following window appears. To continue, click 'Yes'.



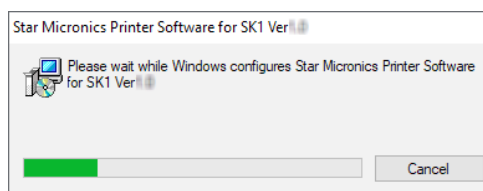
- ⑤ If the following confirmation dialog box appears, select the 'Do not close applications' option, and then click 'OK'.



- ⑥ If the following confirmation window appears, click 'OK'.



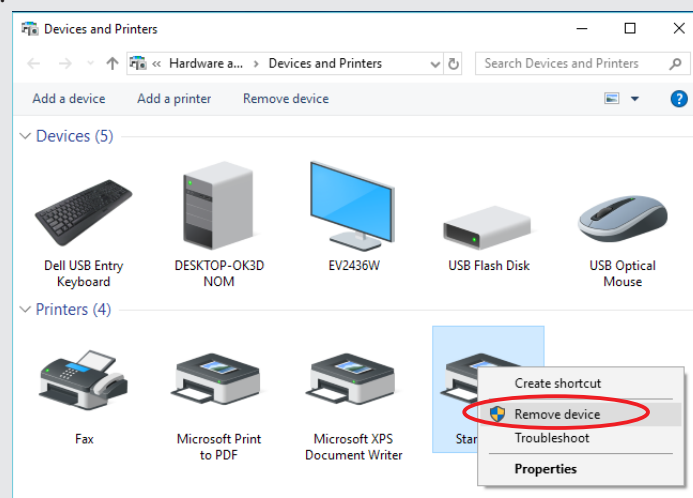
- ⑦ The uninstallation program starts and removes all the relevant software components.



#### ❖ Note

After uninstalling the printer utility, the printer queue icon may remain in "Control Panel"- "Devices and Printers".

To delete it, right-click the printer queue icon and choose "Remove device" from the pull-down menu to delete it.



## 5. Revision History

Rev. No.	Date of Revision	Changes
Rev. 1.0	Jun. 2019	First edition.



URL <http://www.starmicronics.com/support/>